

# Cross Stitch Pumpkin Pattern



**[Visit us at Craftdrawer.com](http://Craftdrawer.com)**

**[View our Craft Books on Amazon](#)**

**[Check out our Amazon Store](#)**

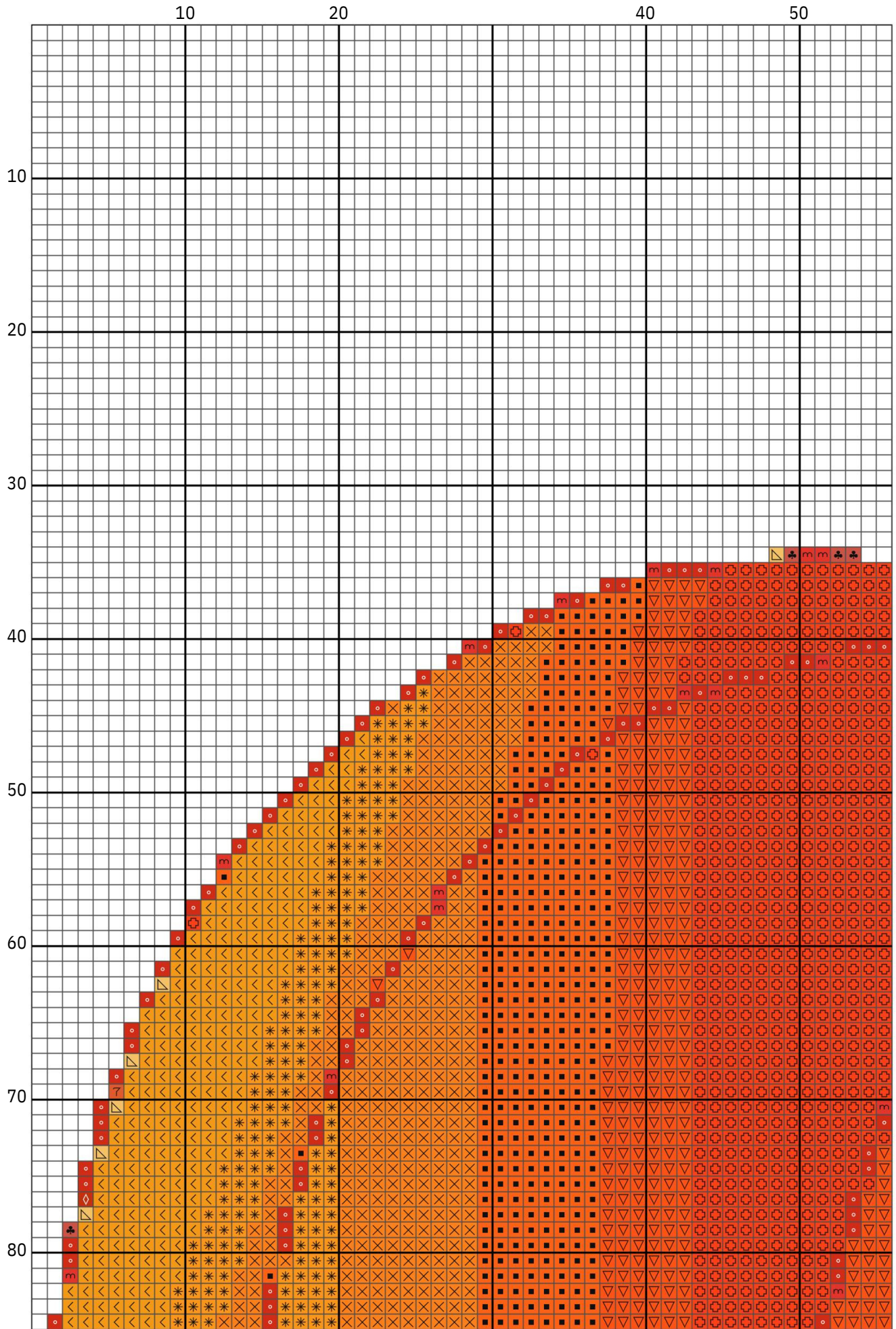
# Pumpkin Cross Stitch Pattern

Cross stitch chart

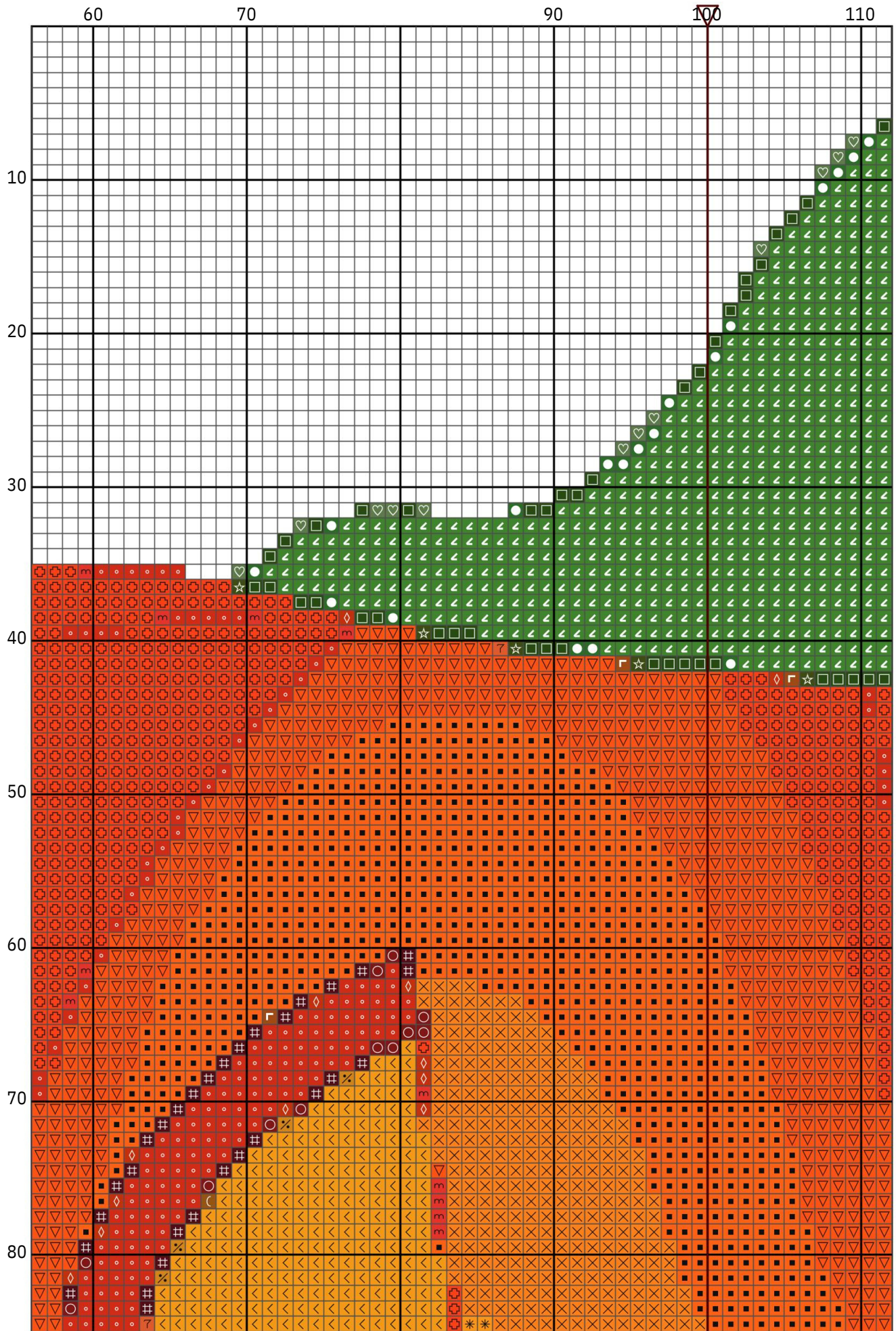


Design size: 200 x 186 stitches

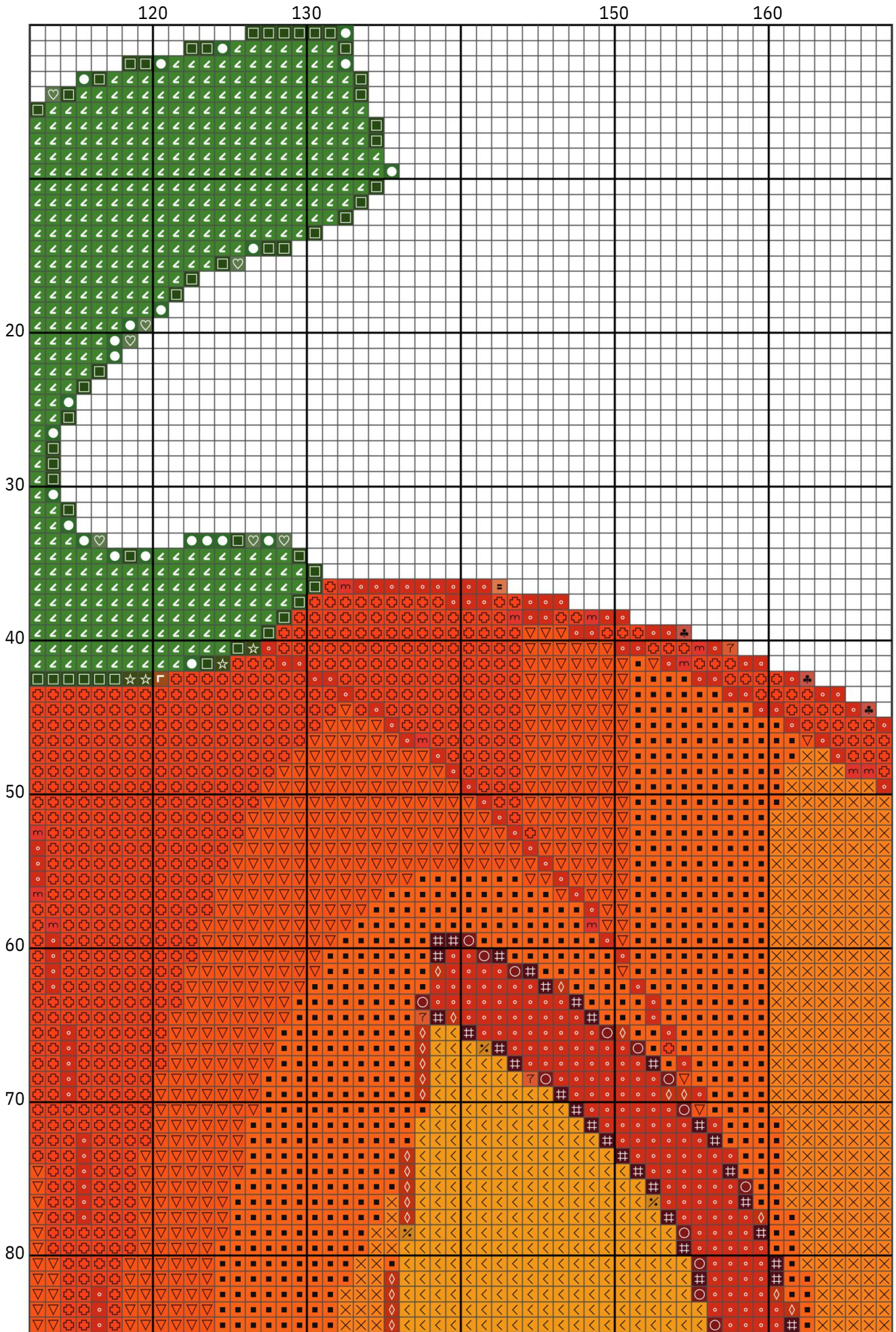














170

180

190

30

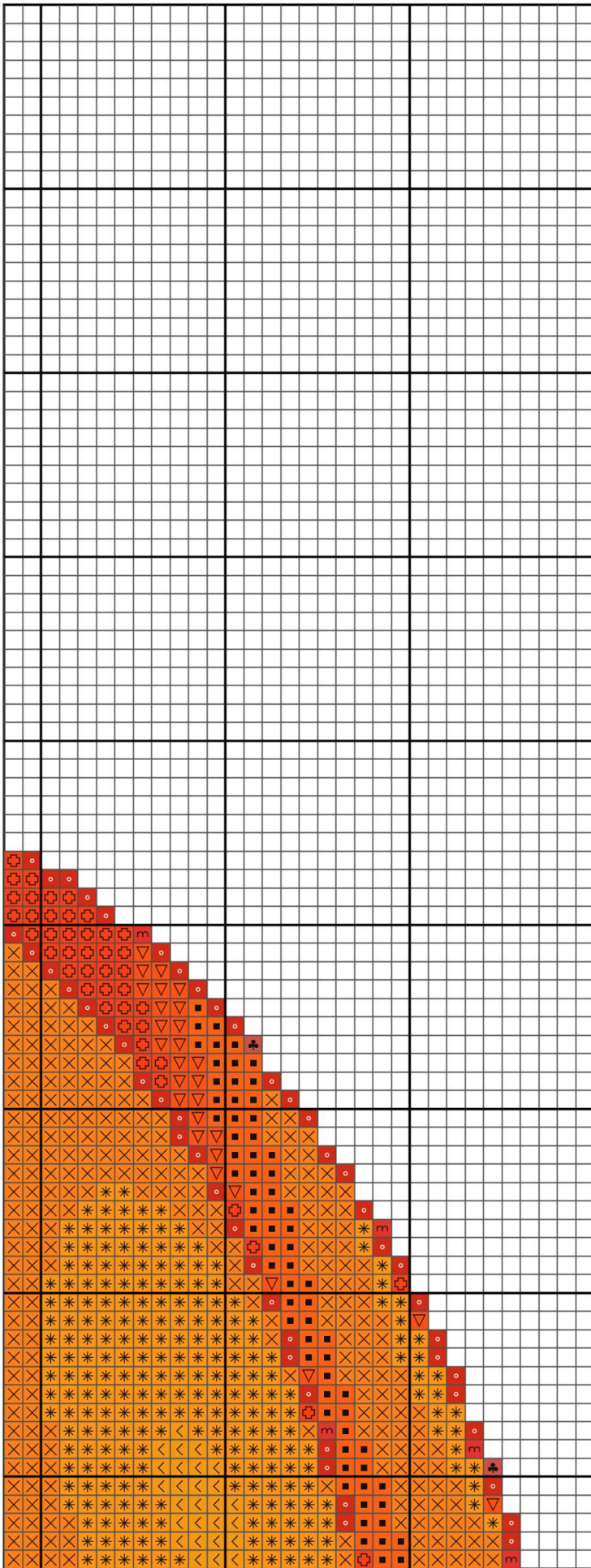
40

50

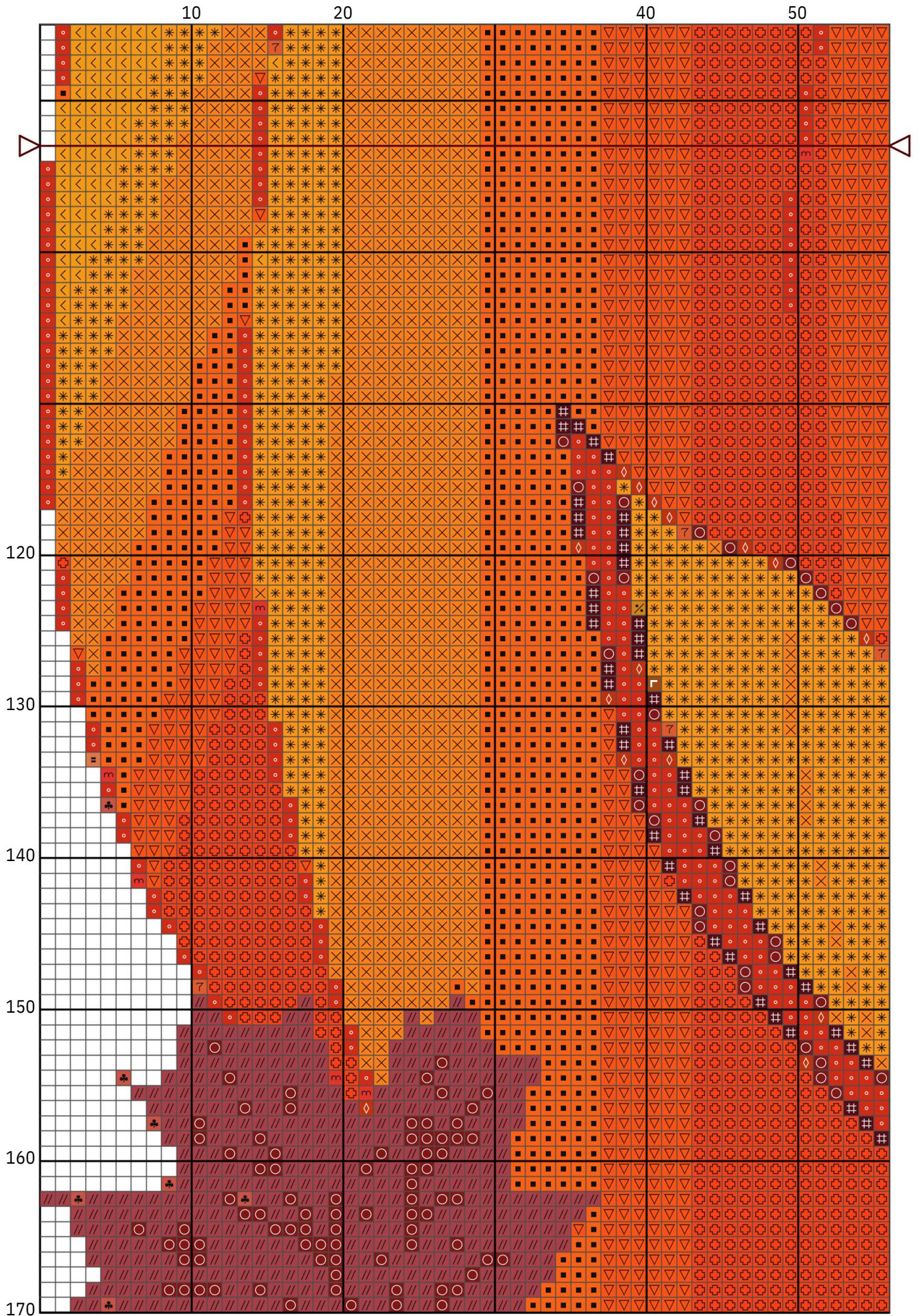
60

70

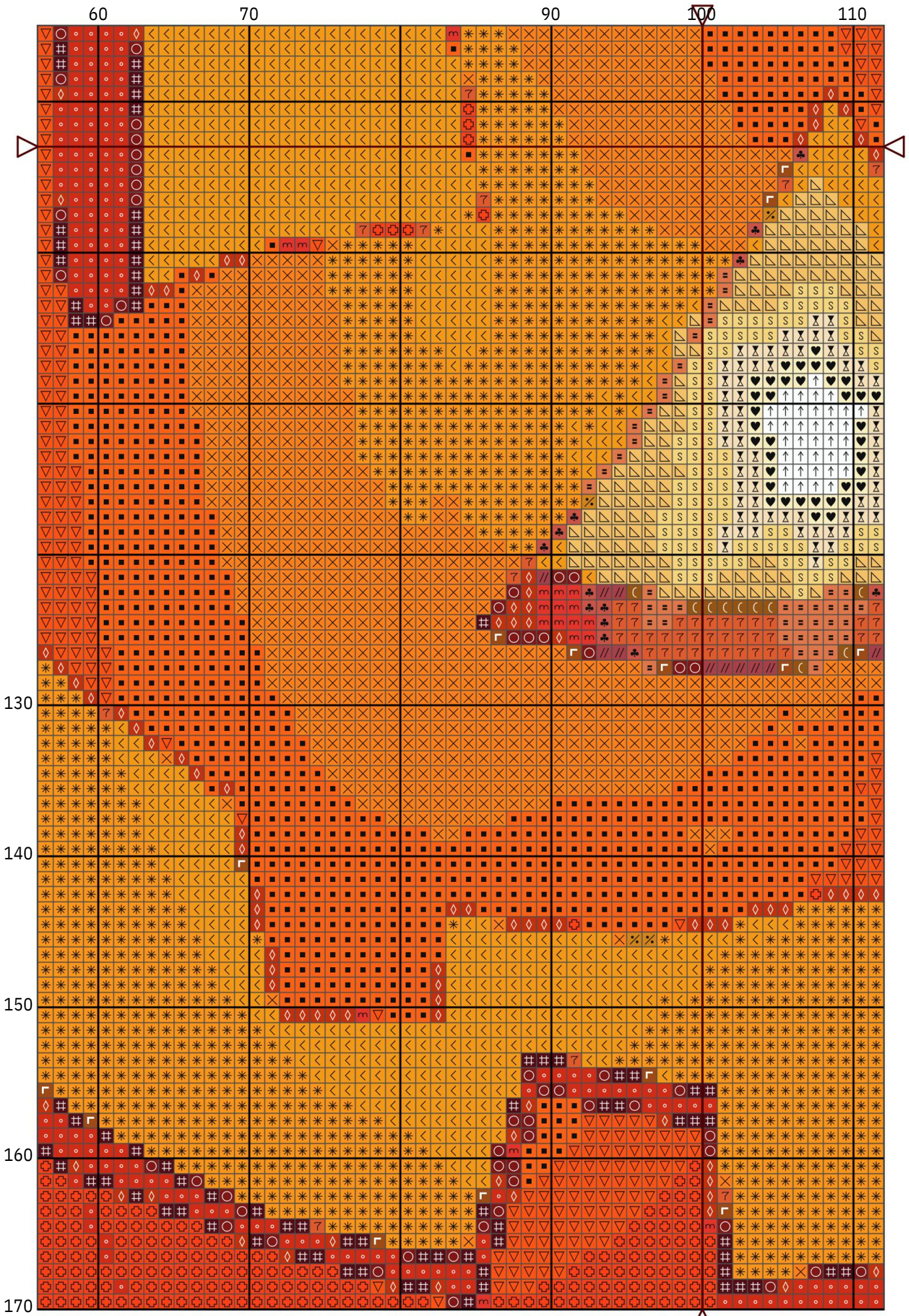
80



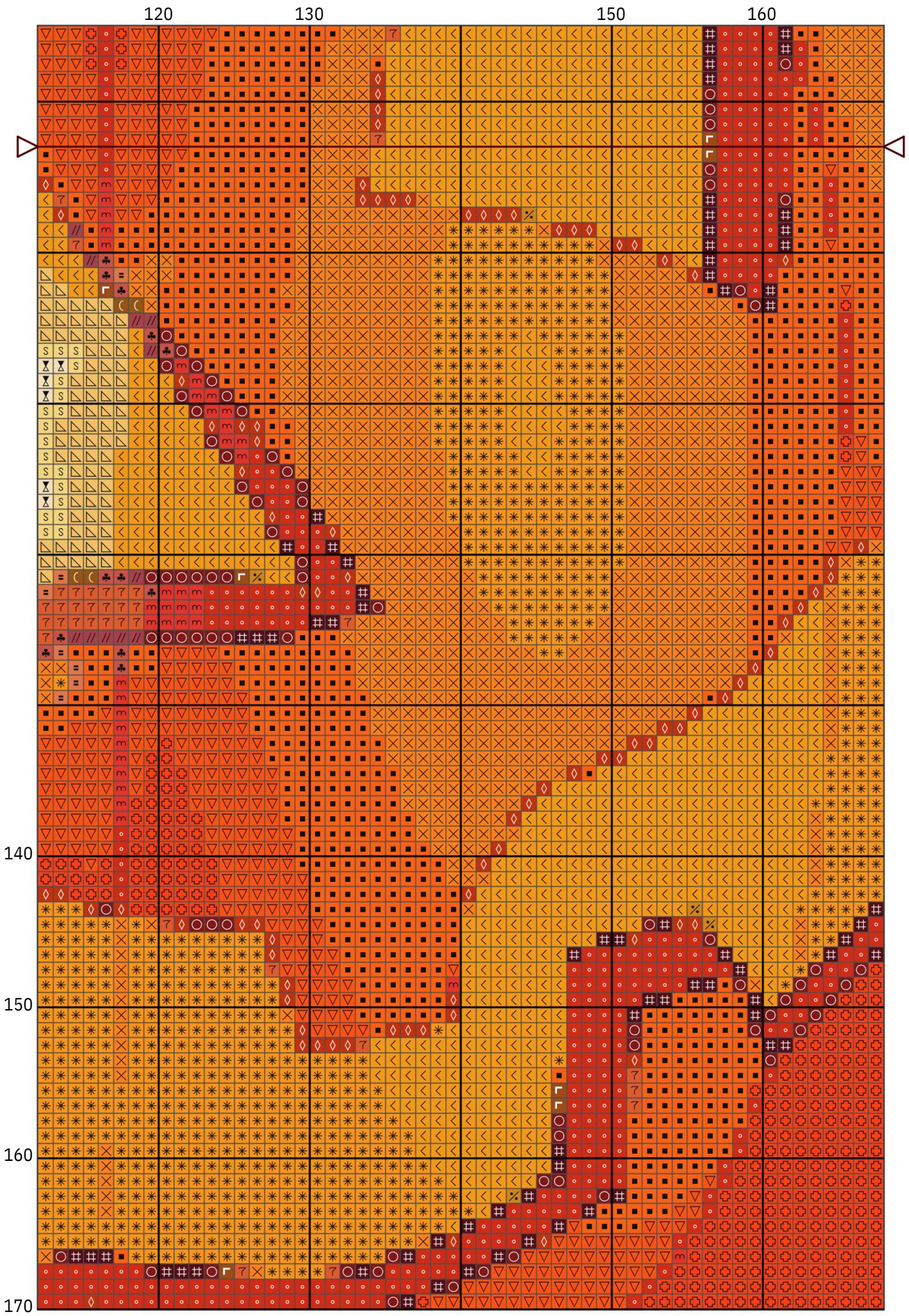




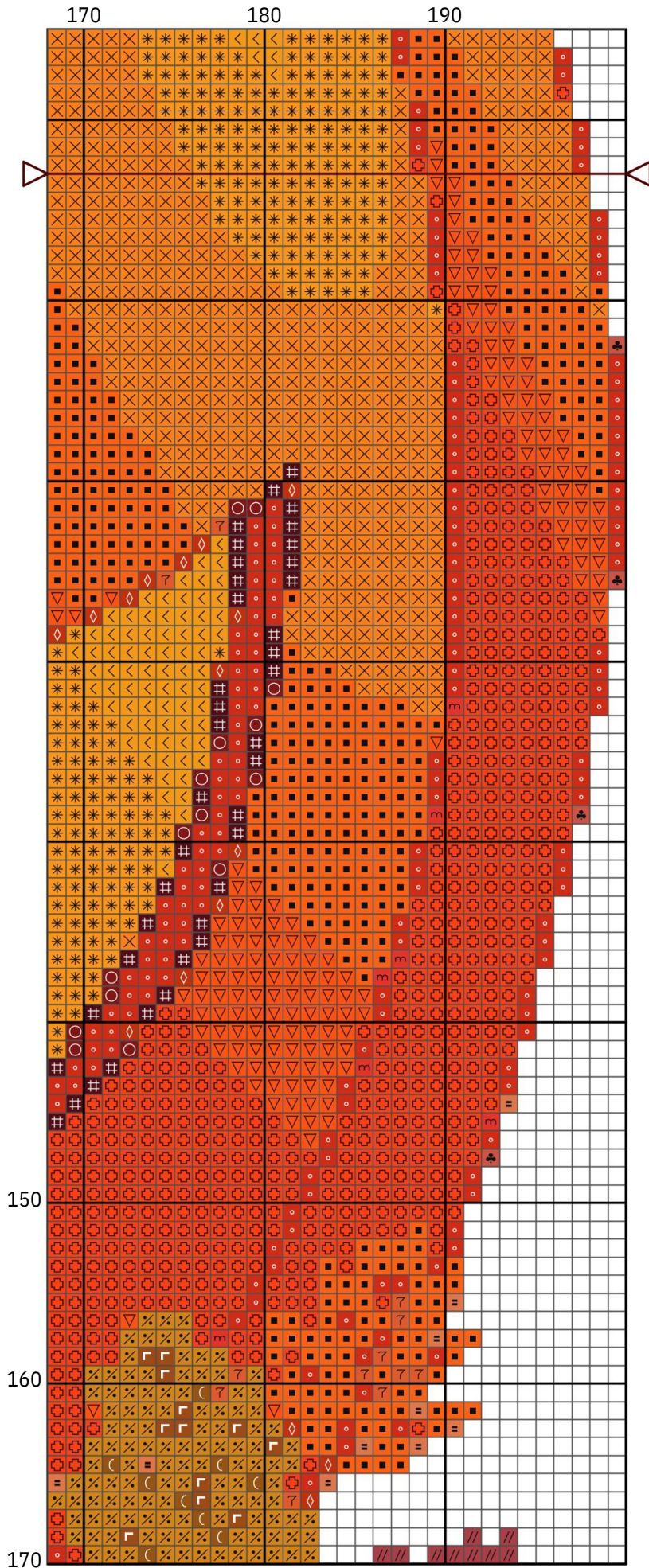




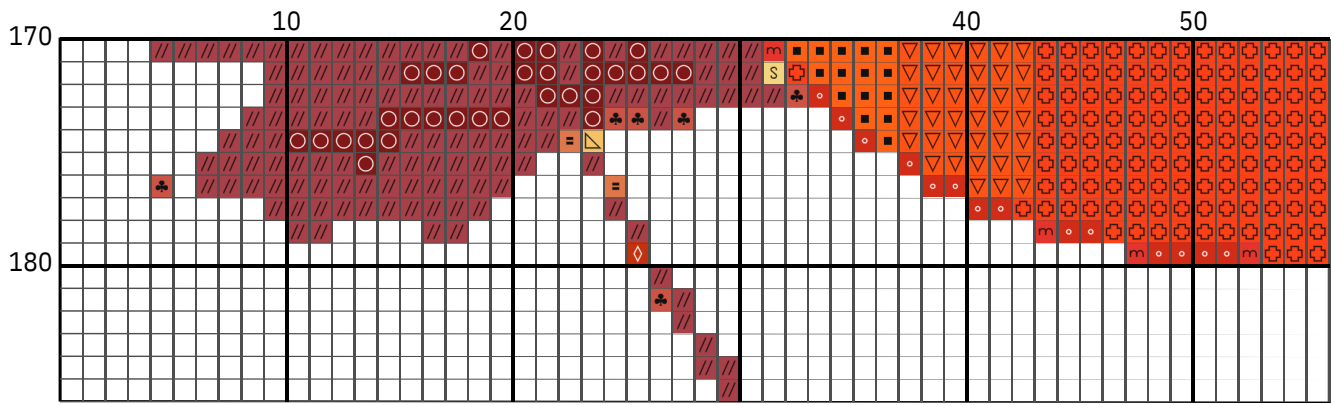








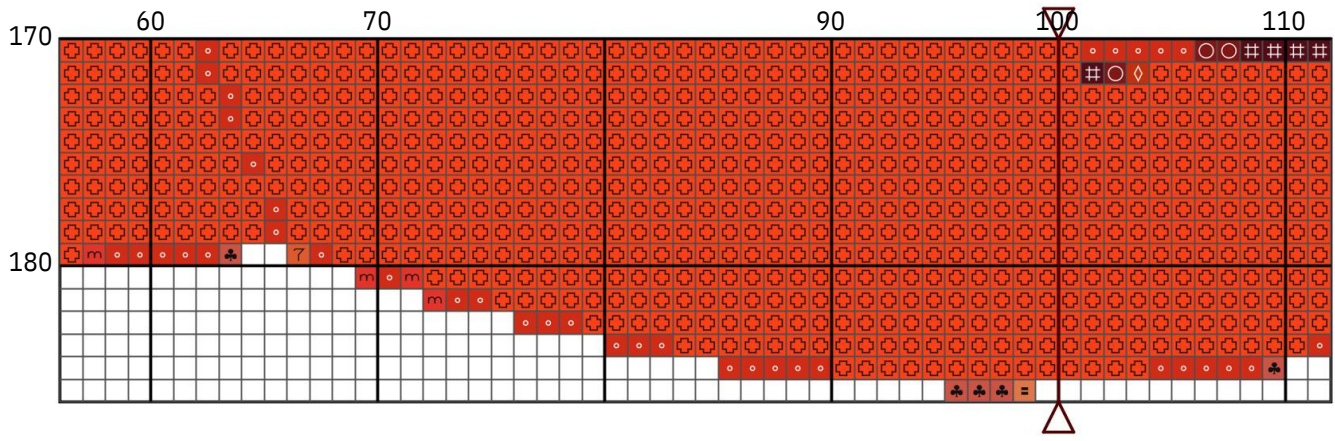




# DMC Floss Used for this Project.

[Find Floss Here for the Pumpkin](#)



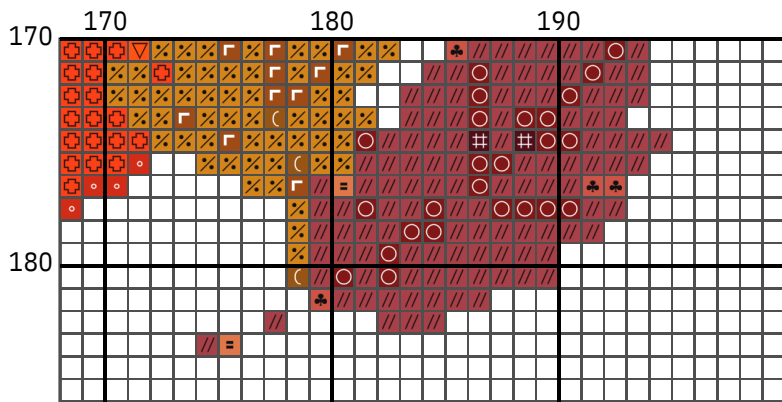


**Check out our Amazon Store**









**DMC Floss Used for this Project.**

**[Find Floss Here for the Pumpkin](#)**



## Floss list for crosses

Use 2 strands of thread for cross stitch

N	Symbol	Number	Name	Stitches
1	↑	↑	DMC B5200 Snow White	37
2	♣	♣	DMC 21 Alizarin - Light	61
3	∩	∩	DMC 351 Coral	131
4	=	=	DMC 402 Mahogany - Very Light	69
5	☆	☆	DMC 469 Avocado Green	9
6	●	●	DMC 701 Green - Light	42
7	↙	↙	DMC 702 Kelly Green	1044
8	◇	◇	DMC 720 Orange Spice - Dark	247
9	■	■	DMC 740 Tangerine	4426
10	✕	✕	DMC 741 Tangerine - Medium	4204
11	✱	✱	DMC 742 Tangerine - Light	3330
12	S	S	DMC 745 Yellow - Light Pale	116
13	♥	♥	DMC 746 Off White	37
14	└	└	DMC 780 Topaz - Ultra Very Dark	48
15	☾	☾	DMC 782 Topaz - Dark	27
16	#	#	DMC 814 Garnet - Dark	309
17	◦	◦	DMC 900 Burnt Orange - Dark	1582
18	□	□	DMC 904 Parrot Green - Very Dark	93
19	∟	∟	DMC 922 Copper - Light	107
20	⊕	⊕	DMC 946 Burnt Orange - Medium	4772
21	▽	▽	DMC 947 Burnt Orange	2868
22	⌵	⌵	DMC 951 Tawny - Light	72
23	⌵	⌵	DMC 972 Canary - Deep	2505
24	<	<	DMC 3363 Pine Green - Medium	19
25	♥	♥	DMC 3722 Shell Pink - Medium	684
26	//	//	DMC 3777 Terra Cotta - Very Dark	353
27	○	○	DMC 3852 Straw - Very Dark	189
28	⌵	⌵	DMC 3855 Autumn Gold - Light	225